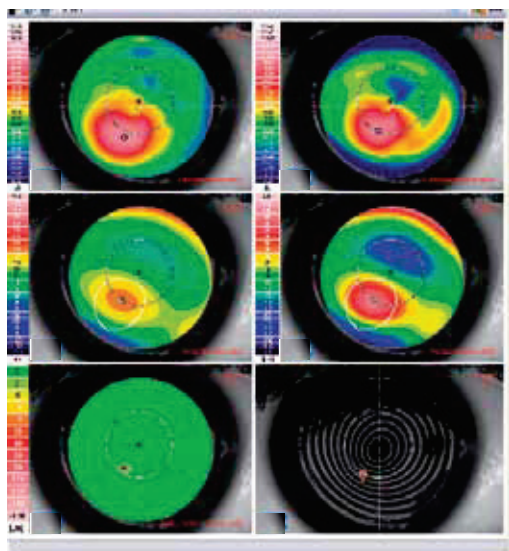
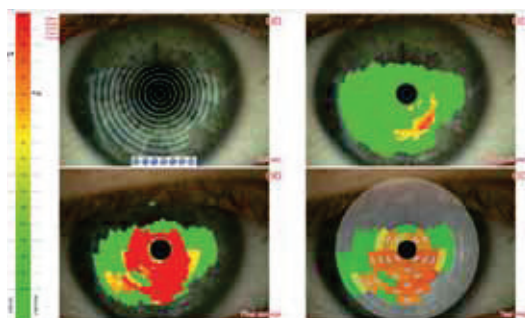


TOPOGRAPHER

VX205 the new topographer that integrates a high-resolution colour digital camera for advanced analysis of the tear film.

THE FUNCTIONS AVAILABLE ARE:

- > Keratoconus screening and follow-up
- > Pupillography integrated
- > Meibomian Gland analysis
- > Tear film analysis
- > Tear meniscus measurement
- > Fluorescein imaging (blue light 470 nm)



Height	510 mm (20.07 in)
Width	205 mm (8.07 in)
Depth	320 mm (12.60 in)
Weight	6 kg (13.23 lbs)



VX205
Diagnostic

TECHNICAL SPECIFICATIONS

REF.	11760 (without PC) 11767 (with PC IMac)
Placido disc	24 rings
Working distance	78 mm
Measured points	6144
Camera	High-resolution colour digital camera (1024x960 pixel)
Connection to the PC	USB 3
Light sources	White Light for corneal topographs and images and filmed in videokeratoscopy; Blue 470 nm led for images and filmed in fluorescein; IR 890 nm led for pupillography and meibography